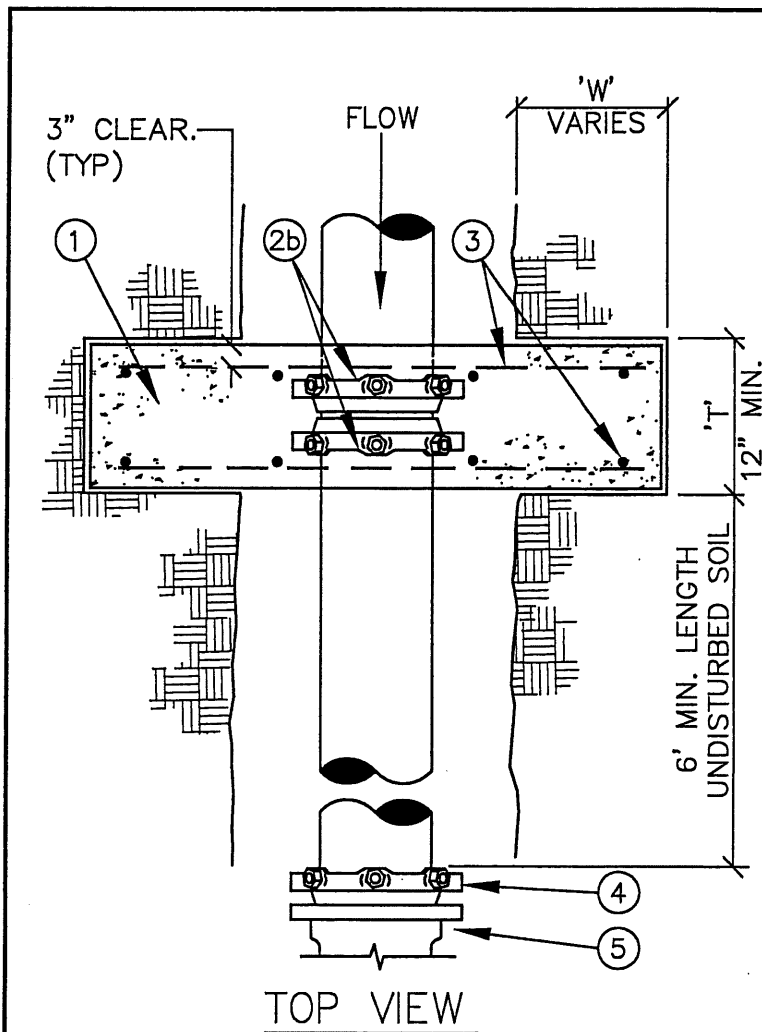


MATERIALS

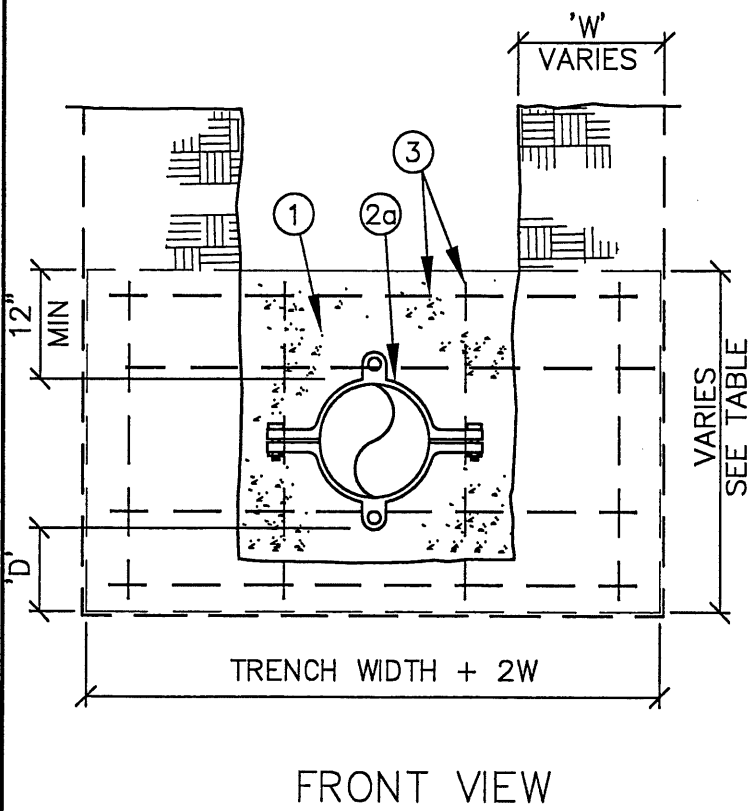
- ① CONCRETE STRADDLE BLOCK.
- ② - EITHER (a) ONE SERRATED-LOCK STYLE SPLIT-RING RESTRAINT HARNESS (ROMAC 600 OR EQUAL), OR (b) TWO RETAINER GLAND WEDGE-STYLE RESTRAINTS, SET OPPOSED (EBBA MEGA-LUG OR EQUAL).
- WEDGE STYLE RESTRAINTS SHALL BE WRAPPED WITH PLASTIC PRIOR TO CONCRETE PLACEMENT.
- ③ #4 REBAR EA. WAY, 12" O.C.
- ④ RETAINER GLAND.
- ⑤ MJ FITTING, VALVE OR BLOWOFF.



PIPE SIZE	'W'	'D'	'T'
6"	12"	8"	12"
8"	16"	10"	12"
10"	20"	12"	12"
12"	24"	18"	18"
>12"	BY ENGINEER		

NOTES:

1. STRADDLE BLOCKS FOR >12" PIPE SHALL BE DESIGNED INDIVIDUALLY BY THE ENGINEER AND SHALL BE BASED ON THE FOLLOWING:
 - a.) 200 PSI WATER PRESSURE.
 - b.) SOIL BRG. CAPACITY, STEEL SIZE & SPACING BY THE ENGINEER.
2. BEARING AREA OF BLOCK SHALL BE AGAINST UNDISTURBED SOIL.
3. STRADDLE BLOCK SHALL HAVE A MINIMUM OF 18" COVER.
4. CONCRETE SHALL HAVE A MIN. 28 DAY STRENGTH OF 3300 PSI.



LAST REVISION DATE: JULY 2015	COPYRIGHT 1998 WESTTECH ENGINEERING, INC.
STRADDLE BLOCK FOR 12" AND SMALLER PIPE	
(NTS)	
SILVERTON, OR	DETAIL NO. 511