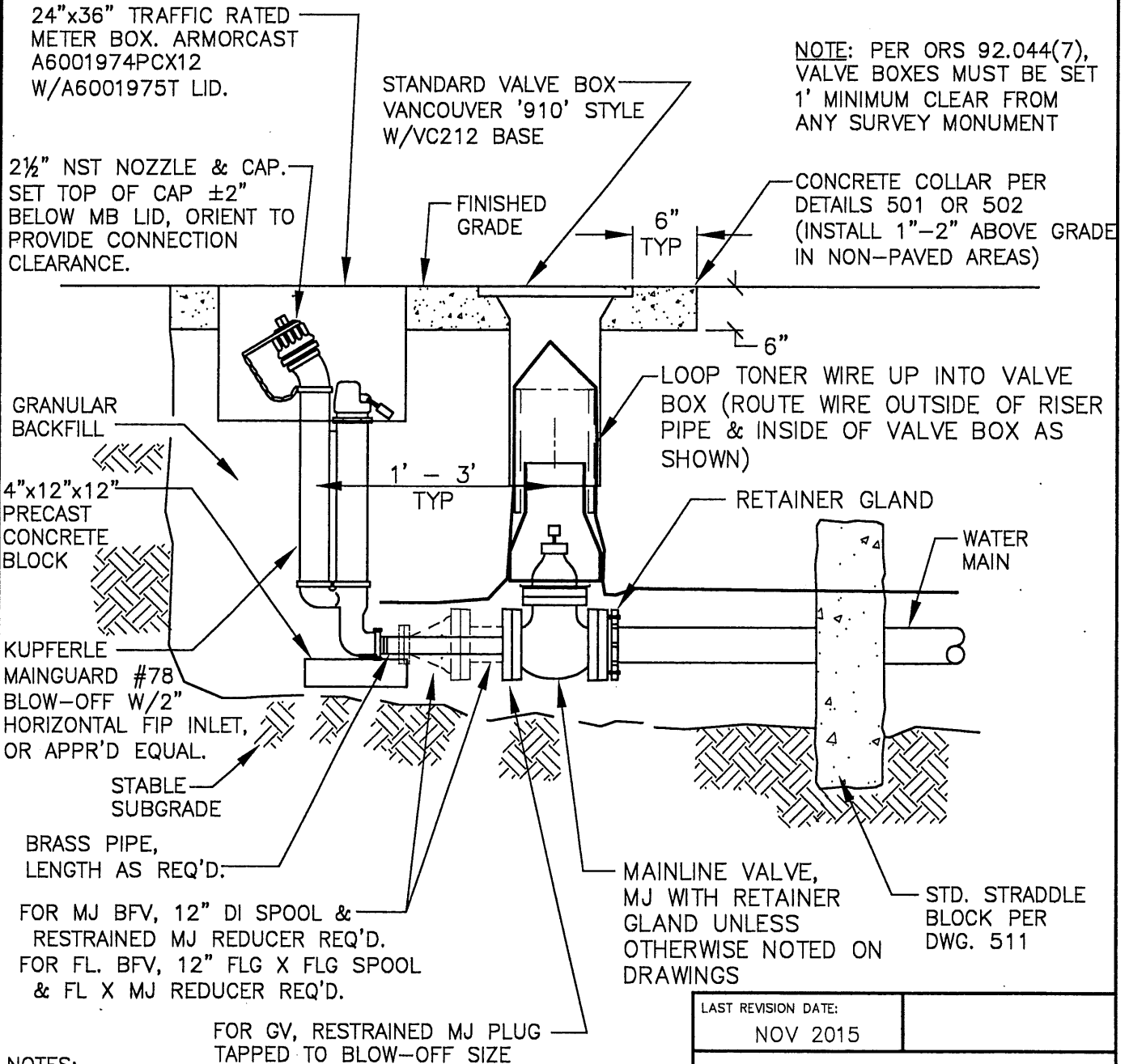


**BLOW-OFF  
SIZES REQUIRED  
(ASSUMES 40 PSI RESIDUAL PRESS.)**

MAIN SIZE	BLOW-OFF SIZE
6" - 8"	2"
10" - 12"	4"
>12"	BY ENGR.



**NOTES:**

1. BACKFILL WITH GRANULAR BACKFILL.
2. REQUIRED ON ALL LINES WHICH MAY BE EXTENDED IN FUTURE OR AS DIRECTED BY PUBLIC WORKS DIRECTOR.
3. ALL CONCRETE TO BE 3300 PSI @ 28 DAYS.
4. FLANGED DUCTILE IRON PIPE AND FITTINGS REQUIRED FOR 4" & LARGER BLOWOFFS.

LAST REVISION DATE: NOV 2015	
<b>MAINLINE BLOWOFF ASSEMBLY</b>	
(NTS)	
SILVERTON, OR	DETAIL NO. 506