

CLEANOUT COVERS: ALL SEWER CLEANOUT LIDS TO READ "SEWER"
 ALL STORM CLEANOUT LIDS TO READ "STORM" OR "C/O".

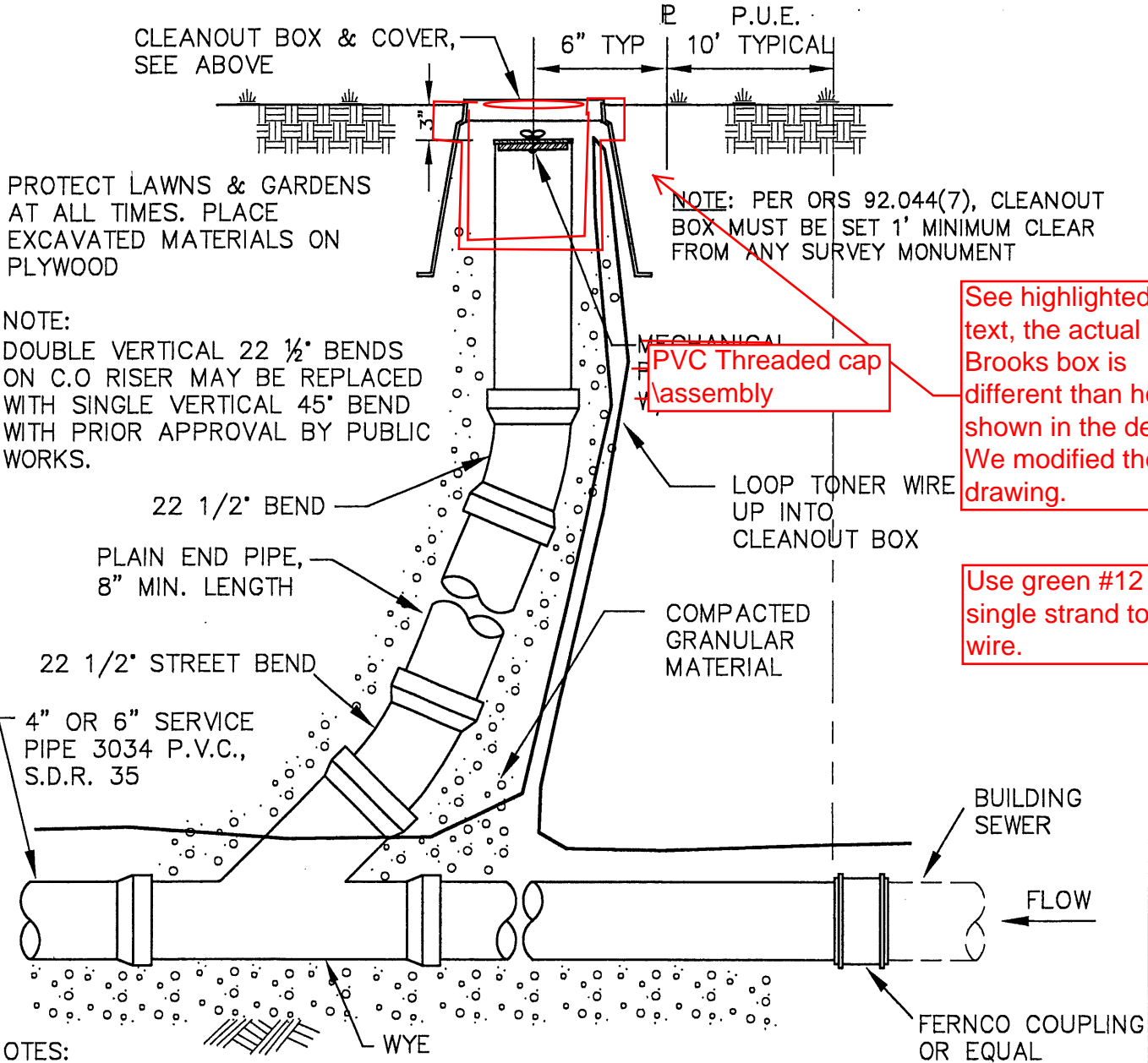
1. NON-TRAFFIC AREAS:

CARSON MODEL 910 T-COVER OR EQUAL (GREEN FOR SEWER, GREY FOR STORM).

2. TRAFFIC AREAS, INCLUDING DRIVEWAYS:

BROOKS #1RT VALVE BOX & LID "TRAFFIC" STYLE OR EQUAL
 (WORDING AS NOTED PER ABOVE).

(FOR CI CLEANOUTS IN UNPAVED AREAS, SET IN 6" THICK CONCRETE PAD)



PROTECT LAWNS & GARDENS AT ALL TIMES. PLACE EXCAVATED MATERIALS ON PLYWOOD

NOTE:
 DOUBLE VERTICAL 22 1/2° BENDS ON C.O RISER MAY BE REPLACED WITH SINGLE VERTICAL 45° BEND WITH PRIOR APPROVAL BY PUBLIC WORKS.

NOTE: PER ORS 92.044(7), CLEANOUT BOX MUST BE SET 1' MINIMUM CLEAR FROM ANY SURVEY MONUMENT

See highlighted text, the actual Brooks box is different than how shown in the detail. We modified the drawing.

PVC Threaded cap assembly

Use green #12 single strand tone wire.

- NOTES:
- CLEANOUT RISER SHALL BE SAME SIZE AND MATERIAL AS LATERAL PIPE.
 - PROVIDE C.I. BOX FOR CLEANOUTS LOCATED IN DRIVEWAYS OR TRAFFIC AREAS (PROVIDE 6" THICK CONCRETE PAD, THAT IS 6" LARGER THAN OUTSIDE DIM OF CLEANOUT BOX).
 - CLEANOUT PIPE SHALL BE LEFT A MINIMUM OF 18" ABOVE EXISTING GRADE UNTIL ALL CURBING IS INSTALLED AND ALL PRIVATE UTILITY TRENCHES ARE BACKFILLED. CLEANOUTS SHALL THEN BE SET NO MORE THAN 6" BELOW FINISH GRADE, AND CLEANOUT BOXES SET FLUSH WITH FINISH GRADE.

LAST REVISION DATE: NOV 2015	COPYRIGHT 1996 WESTECH ENGINEERING, INC.
STANDARD SERVICE LATERAL CLEANOUT (SEWER & STORM) (NTS)	
SILVERTON, OR	DETAIL NO. 416