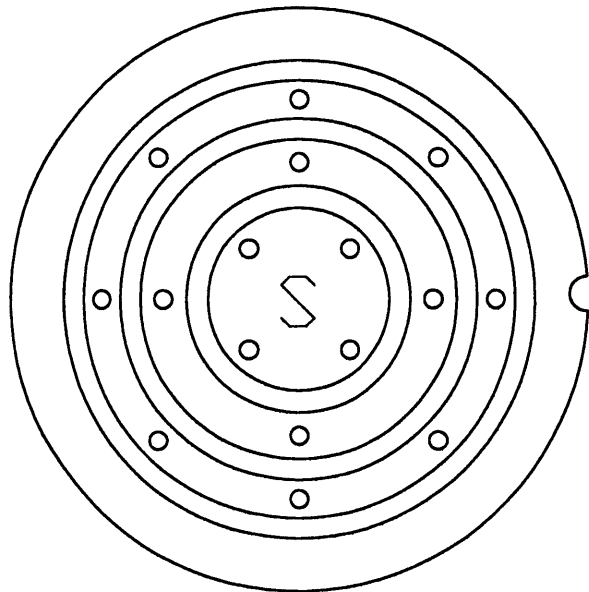
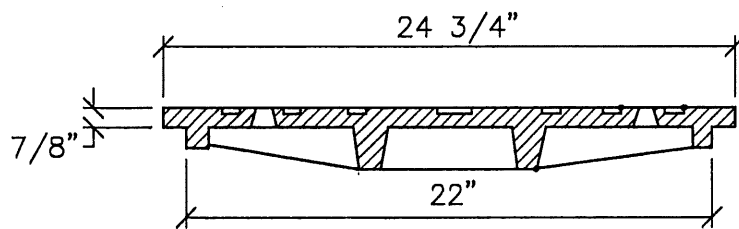


SANITARY

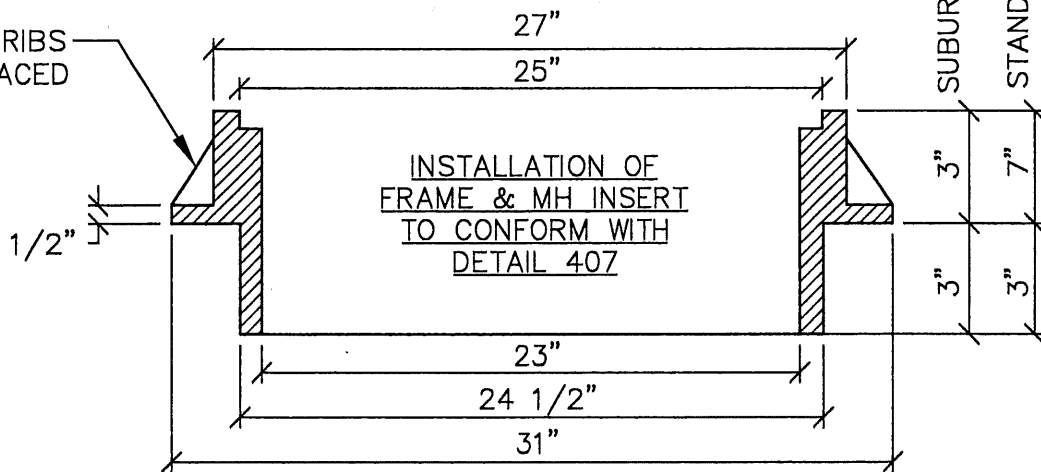


STORM



SUBURBAN FRAME
STANDARD FRAME

8 EA. -1/2" RIBS
EQUALLY SPACED



NOTES:

1. COVER AND FRAME SHALL BE GRAY CAST IRON
ASTM A-48, CLASS 30.
2. COVER AND FRAME TO BE MACHINED TO A TRUE
BEARING ALL AROUND.
3. NOTCH LID FOR LIFTING HOOK.
4. SUBURBAN FRAME SHALL BE USED ONLY WITH
PRIOR WRITTEN AUTHORIZATION FROM THE PUBLIC
WORKS DIRECTOR.

LAST REVISION DATE: NOV 2015	
MANHOLE FRAME AND COVER (STANDARD AND SUBURBAN)	
(NTS)	
SILVERTON, OR	DETAIL NO. 405