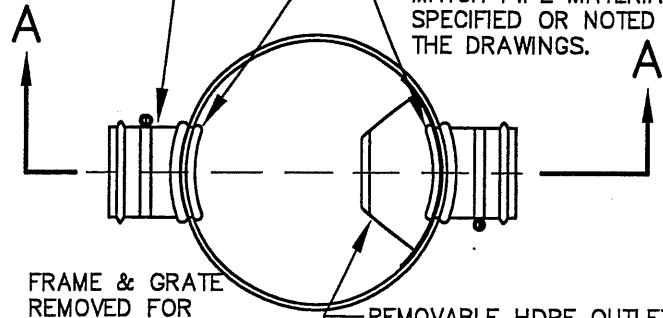


SEE NOTE 5
(RE: INLET)

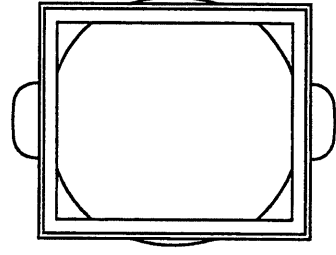
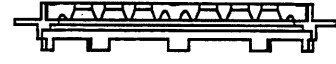
INSERTA-TEE CONNECTION,
SEE NOTE 3 & 4.
INSERTA-TEE SOCKET TO
MATCH PIPE MATERIAL
SPECIFIED OR NOTED ON
THE DRAWINGS.



FRAME & GRATE
REMOVED FOR
CLARITY

PLAN

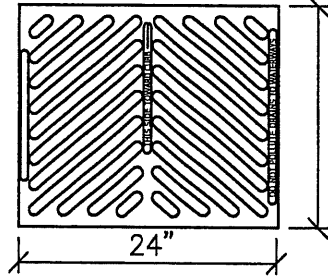
REMOVABLE HDPE OUTLET TRAP
REQUIRED ON ALL PRIVATE CATCH
BASINS (OMIT FOR FLOW-THRU JUNCTION
STRUCTURES). ALL CLIPS & HARDWARE
TO BE STAINLESS STEEL.



FRAME TO INCLUDE TABS THAT
MATCH BASIN OD TO PREVENT
DISPLACEMENT. FRAME BODY TO
BEAR ON COMPACTED BASEROCK
(SEE SECTION A-A)

FRAME

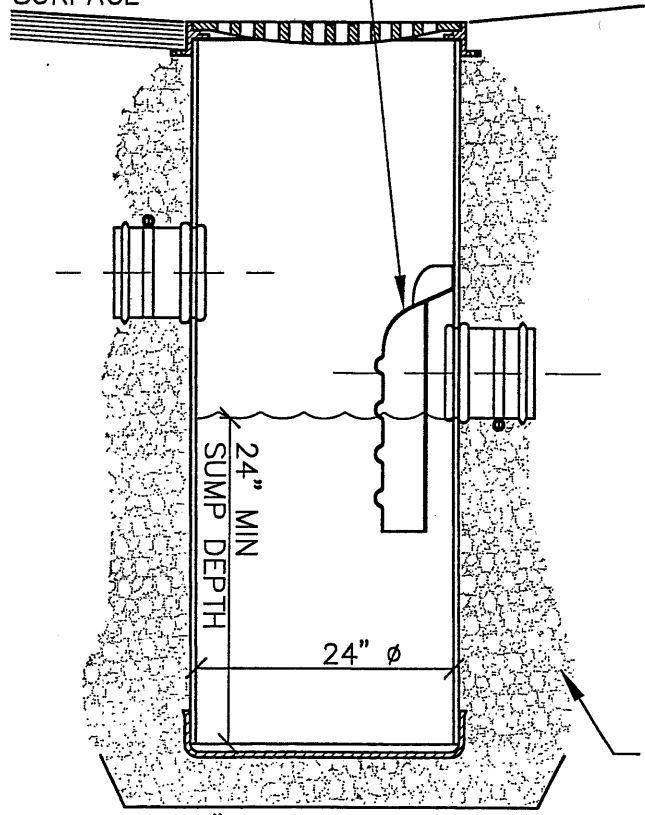
44 X SLOT ϕ 1.00 THRU



APPROX. DRAIN AREA =
202.48 SQ IN

GRATE

PAVED
SURFACE



24" MIN
SUMP DEPTH

24" ϕ

COMPACTED GRANULAR BACKFILL
AROUND CATCH BASINS & AREA
DRAINS (GRADE AS REQUIRED TO
SUPPORT GRATE FRAME).

MIN 4" GRANULAR BEDDING

SECTION A-A

NOTES:

1. NYLOPLAST TRAFFIC RATED DRAIN BASIN OR APPROVED EQUAL W/NYLOPLAST FRAME & GRATE.
2. HERRING-BONE STYLE GRATE TO BE DUCTILE IRON PER ASTM A536 GRADE 70-50-05.
3. SEE CONSTRUCTION DRAWINGS FOR PIPE SIZE, LOCATION, ORIENTATION AND INVERT ELEVATIONS.
4. CONNECTIONS TO PVC CATCH BASIN TO BE INSERTA-TEE STYLE FITTINGS (FACTORY OR FIELD INSTALLED).
5. FLOW-THRU CONFIGURATION SHOWN IS ALLOWED ONLY FOR AREA DRAINS OR JUNCTION BOXES.
6. SET CB GRATE SQUARE WITH BUILDINGS OR WITH EDGE OF PARKING LOT OR DRIVEWAY WHEREIN IT LIES.
7. ADJUST PAVING OR GRADING SO WATER FLOWS TO STRUCTURE INLET WITH NO PONDING.

NOTE: PER ORS 92.044(7),
AREA DRAIN MUST BE SET
1' MINIMUM CLEAR FROM
ANY SURVEY MONUMENT

LAST REVISION DATE: JULY 2015	JO #
PARKING LOT CATCH BASIN (TRAFFIC RATED PVC w/TRAP, DUCTILE IRON FRAME/GRATE) (NTS)	
SILVERTON, OR	DETAIL NO. 317