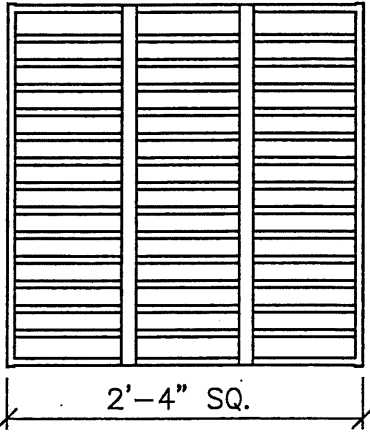
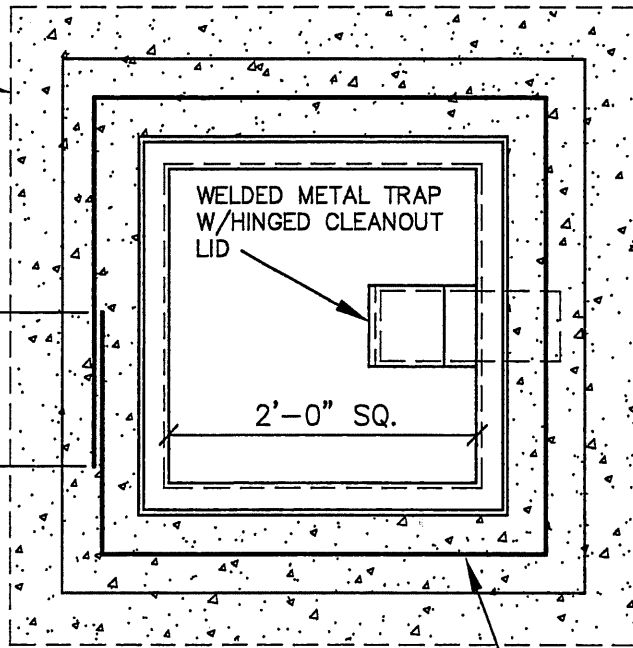


CAST-IN-PLACE
REINFORCED CONCRETE
SUPPORT COLLAR



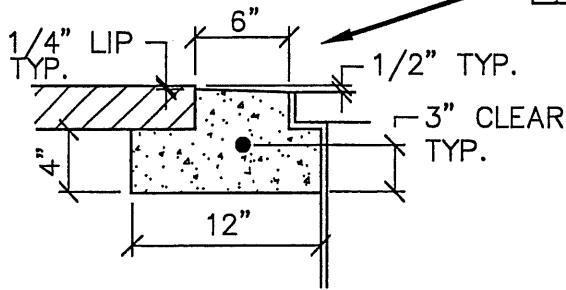
GRATE: WELDED STEEL DROP-IN
BAR GRATE (ASTM A36).
END BARS: 1/2" X 2"
CROSS BARS: 1/2" X 2" @ 2" O.C.
BIKE STRAPS: 1/8" X 1" (2 REQ'D)
16,000 LB. UNIFORM LOAD CAPACITY

GRATE DETAIL



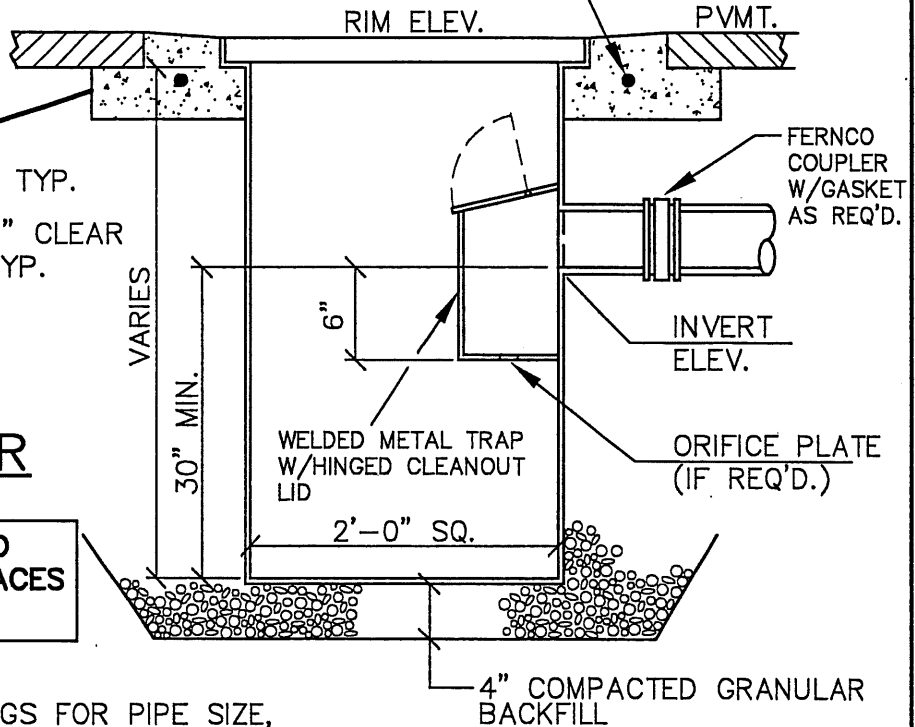
PLAN VIEW

#4 REBAR
CONTINUOUS



CONCRETE COLLAR

CONSTRUCT BASIN OF WELDED
1/4" STEEL. COAT ALL SURFACES
WITH ASPHALTIC PAINT.



NOTES:

1. SEE CONSTRUCTION DRAWINGS FOR PIPE SIZE, LOCATION AND INVERT ELEVATION.
2. OUTLET: SIZE AS REQ'D. FOR INDICATED PIPE SIZE.
3. FOR JUNCTION BOX, REPLACE GRATE WITH 3/4" STEEL PLATE. DRILL ONE, 1" LIFTING HOLE, CENTERED IN ONE END OF THE PLATE. WELD SHIMS TO RIM AS REQUIRED TO RAISE PLATE TO RIM ELEVATION.
4. SET CB SQUARE WITH BUILDINGS OR WITH EDGE OF PARKING LOT OR DRIVEWAY WHEREIN IT LIES.
5. ADJUST PAVING SO WATER FLOWS TO CB WITH NO PONDING.

LAST REVISION DATE: JULY 2015	
PARKING LOT CATCH BASIN (LYNCH STYLE) (NTS)	
SILVERTON, OR	DETAIL NO. 316