

FOR USE ONLY WHERE SPECIFICALLY APPROVED BY PUBLIC WORKS DIRECTOR AND CITY ENGINEER.

1/2" DIA GALVANIZED DEBRIS RODS, GROUT INTO CURB @ BASE

TOP OF CURB

NORMAL SLOPE OF GUTTER PAN

STUD ANCHORS 3 MIN.

1/4" x 3-1/2" x 1" GALVANIZED STEEL CHANNEL W/ANCHORS

2%

BOTTOM OF INLET 1-1/2" BELOW NORMAL GUTTER LEVEL

SUBGRADE ELEVATION

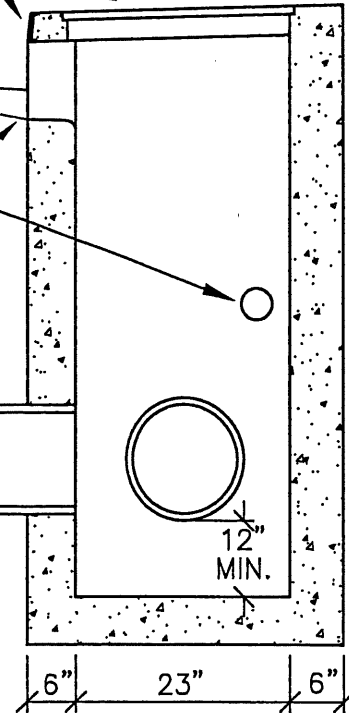
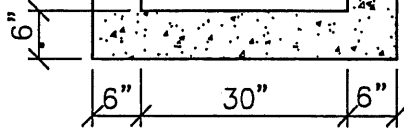
SUBGRADE DRAIN

4' 6" MAX. (RIM TO INVERT)

10" MIN. 18" MAX.

10" MIN. 24" MAX.

12" MIN.



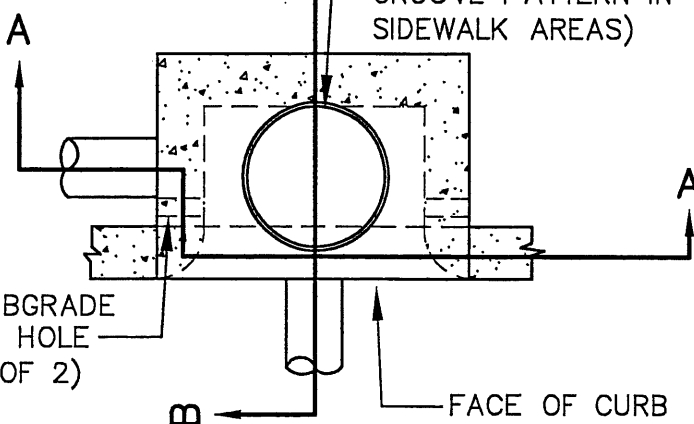
SECTION A-A

SECTION B-B

CAST IRON MANHOLE FRAME & LID (PROVIDE ANTI-SLIP DIAMOND GROOVE PATTERN IN SIDEWALK AREAS)

NOTES:

1. SEE CONSTRUCTION DRAWINGS FOR PIPE SIZE, LOCATION AND INVERT ELEVATION.
2. ALL CONCRETE TO BE 3500 PSI @ 28 DAYS.
3. MATCH EXISTING CURB UNLESS OTHERWISE NOTED.



3" SUBGRADE DRAIN HOLE (TYP OF 2)

FACE OF CURB

PLAN

LAST REVISION DATE: JULY 2015	COPYRIGHT 1995 WESTECH ENGINEERING, INC.
CURB-INLET CATCH BASIN	
(NTS)	
SILVERTON, OR	DETAIL NO. 314