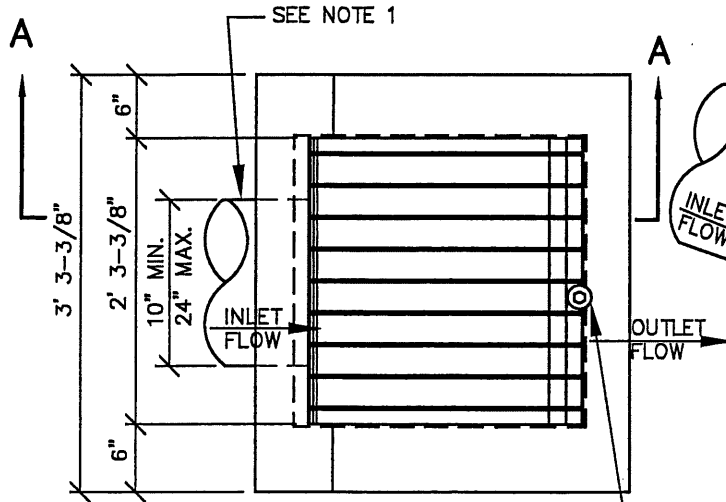
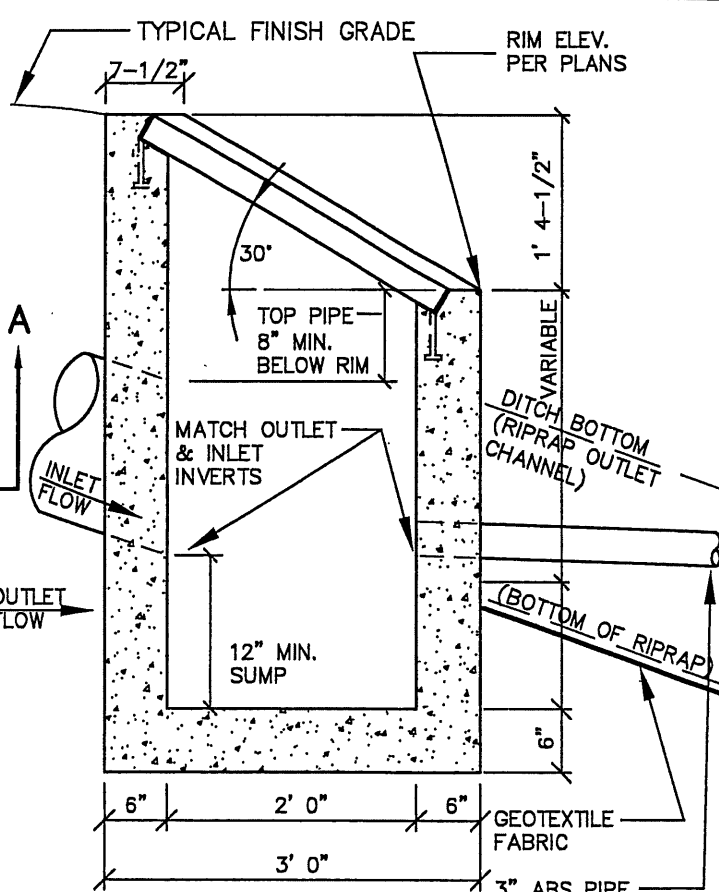


NOTE: CONTRACTOR TO VERIFY FINISH GRADE ELEV'S PRIOR TO INSTALLATION TO ENSURE THAT TOP OF OUTLET STRUCTURE DOES NOT EXTEND ABOVE SURROUNDING GRADE UNLESS OTHERWISE NOTED ON DWGS OR APPROVED BY CITY. PROVIDE OUTLET PIPE & OUTLET CHANNEL (LENGTH & CONFIGURATION PER NOTE 4) AS NOTED UNLESS OTHERWISE SHOWN ON APPROVED DWGS OR REQUIRED BY CITY.

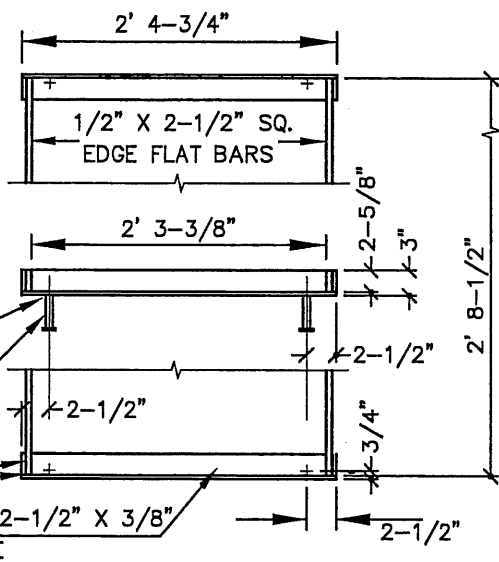


PLAN

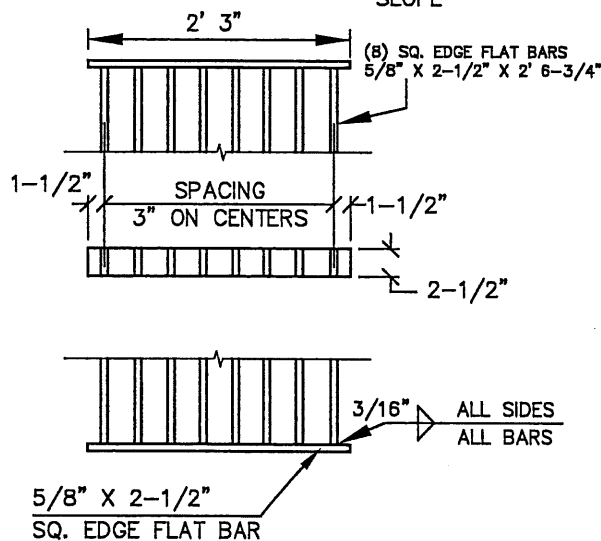
INSTALL SINGLE 1/2" ST. STEEL EXPANSION ANCHOR BOLT & 2" PLATE WASHER UNLESS OTHERWISE APPROVED OR REQUIRED BY CITY



SECTION A - A



FRAME & GRATE



NOTES:

1. SEE CONSTRUCTION DRAWINGS FOR PIPE SIZE, LOCATION AND INVERT ELEVATION.
2. FRAME & GRATE SHALL BE ASTM A-36 STEEL, HOT-DIP GALV AFTER CONSTRUCTION.
3. ALL CONCRETE TO BE 3300 PSI MIN AT 28 DAYS.
4. PROVIDE RIPRAP OUTLET CHANNEL (TYP 18" MIN THICK) W/2H:1V SIDE SLOPES, 12" MIN CHANNEL DEPTH & LENGTH AS NOTED ON DRAWINGS (10' MIN). PROVIDE GEOTEXTILE UNDER RIPRAP TO TOP OF BANK (NO LAPS). USE 5"-12" GRADED ANGULAR RIPRAP (TYP), FILL VOIDS BETWEEN STONE WITH 3/4"-0 BASEROCK.

LAST REVISION DATE: JULY 2015	COPYRIGHT 1996 WESTECH ENGINEERING, INC.
STORM OUTLET ENERGY DISSIPATOR BASIN	
(NTS)	
SILVERTON, OR	DETAIL NO. 313A