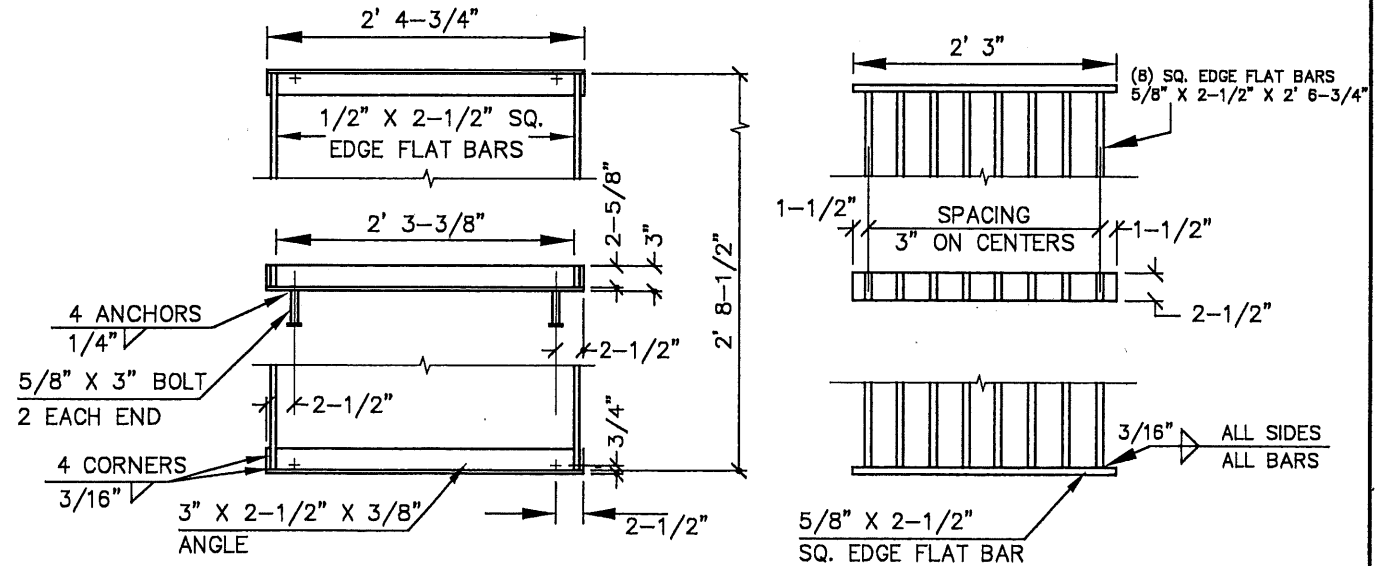
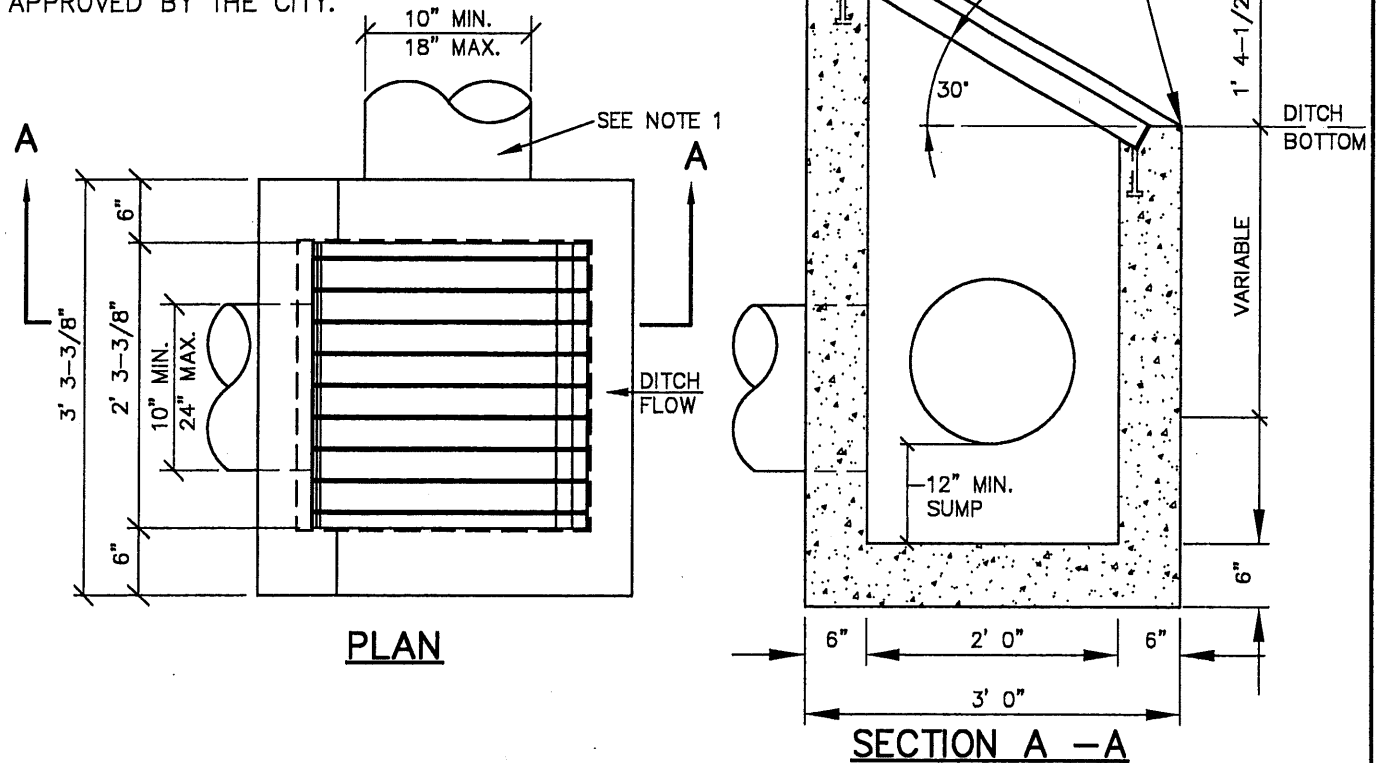


**NOTE:** CONTRACTOR TO VERIFY CB DATA & FINISH GRADE ELEV'S PRIOR TO INSTALLATION TO ENSURE THAT TOP OF CB DOES NOT EXTEND ABOVE SURROUNDING GRADE UNLESS OTHERWISE SPECIFICALLY NOTED ON THE DRAWINGS OR APPROVED BY THE CITY.



- NOTES:**
- FRAME & GRATE**
1. SEE CONSTRUCTION DRAWINGS FOR PIPE SIZE, LOCATION AND INVERT ELEVATION.
  2. FRAME & GRATE SHALL BE ASTM A-36 STEEL, HOT-DIPPED GALV. AFTER CONSTRUCTION.
  3. ALL CONCRETE TO BE 3000 PSI MIN AT 28 DAYS.
  4. PRIOR TO CB INSTALLATION, CONTRACTOR SHALL VERIFY RIM ELEVATIONS LISTED AGAINST DITCH & FINISH GRADE ELEVATIONS, & NOTIFY CITY OF ANY DISCREPANCIES.

LAST REVISION DATE: JULY 2015.	COPYRIGHT 1996 WESTECH ENGINEERING, INC.
<b>TYPE 3 DITCH INLET CATCH BASIN</b>	
(NTS)	
SILVERTON, OR	DETAIL NO. <b>313</b>